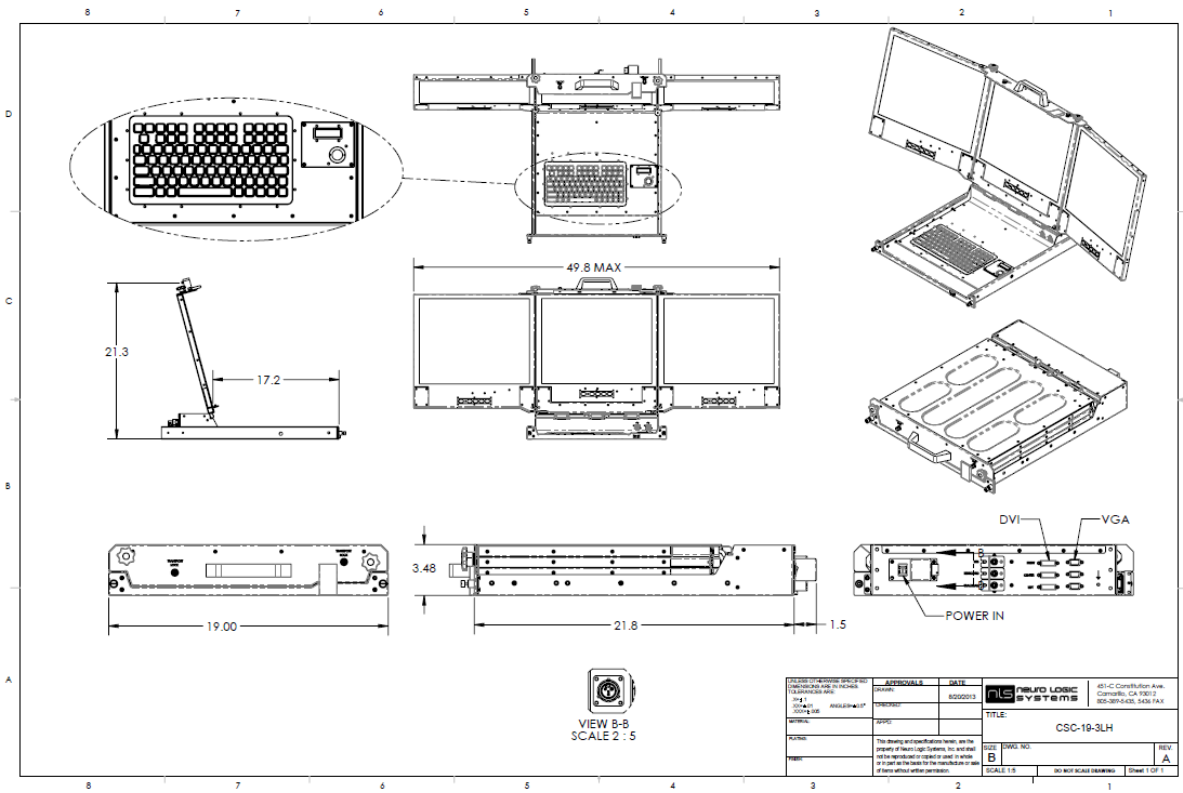


CSC-19-ML 2U Dual and Triple KVMs and Displays

For oilfield services, vehicle transit, airborne and other harsh environment applications requiring rugged, dual and triple displays and KVMs that stow away in a compact rack space.



Technical Specifications	
Panel Size	19.0"/482.6mm Diagonal
Active Display Area	14.81"/376.3mm (H) x 17.87"/301.1mm (V)
Native Resolution	1280(H) x 1024(V) (SXGA); 5:4 AR
Color Depth	16.7M (6-bit + A-FRC); 256 gray scales
Luminance	250 cd/m ² standard; 1000cd/m ² optional
Dimming	500:1 down to < 1 cd/m ²
Contrast Ratio	1000:1 (typical dark ambient)
Response Time	5 msec gray- to gray (typical)
Viewing Angle (CR>10)	R/L/U/D 85/85/80/80 (CR>10)
Color Temperature	6500K standard; optional 5000K/8000K/9300K/User-Defined
Input Interface	Standard: 1x Analog RGB VGA, 1x Digital DVI-D Video Optional: Composite NTSC, HDMI, Display Port, HD-SDI, USB DisplayLink
VESA Video Compatibility	640x480 up to 1280x1024 standard.
Vertical Refresh	Up to 75 Hz at 1280x1024
Analog RGB Video Synch	Digital Separate Synch, Composite Synch; Optional Synch on Green
Composite Video (optional)	NTSC, PAL, SECAM, RS-170, RS-343
User Controls Each Panel	Luminance Up/Down, Power, Menu, Select Up/Down, Adjust Up/Down; Hot Keys
Touchscreen Option	4/5-wire Resistive; RS232 and/or USB Output
Power Supply	
AC	95-264VAC, 47-440Hz, Auto Switch
Optional DC	28VDC (18-36V); Complies with MIL-STD-1275 (vehicle); MIL-STD-704 (aircraft)
Power Consumption (3 LCDs)	60 watts maximum at full brightness
Vibration-Functional	2G, 5-500-5Hz Sine wave X/Y/ Z each direction, 30 min.
Shock, Transit*	70G, 11ms +/-X, +/-Y, +/- Z, one time
EMI	EN 55022-B, FCC-B; optional MIL-STD-461
Safety	CSA, IEC/EN 60950-1
Ingress Protection	IP54 (LCDs); IP65 (Keyboard and Trackball)
Operating Temp	0°C to +50°C
Storage Temp	-20°C to +60°C
Humidity: Operating	10% to 90% at 50°C
Altitude: Operating	15,000ft
Altitude: Storage	40,000ft
Rapid Decompression	8,000ft to 40,000ft to 25,000ft
Chassis Construction	Aluminum Alloy Standard
Size, Closed Position	3.45"(2U) high x 20.0" deep
Weight	32lbs nom.

*Designed and Built to meet these standards. Consult Factory for Certification Test Reports.